

June 15, 2015

To: General Release

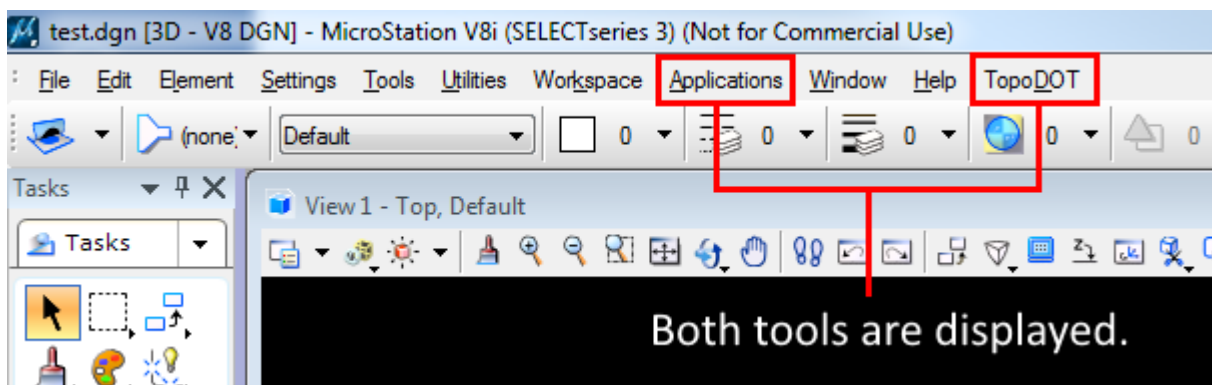
From: Mauricio Terneus
Certainty 3D, LLC

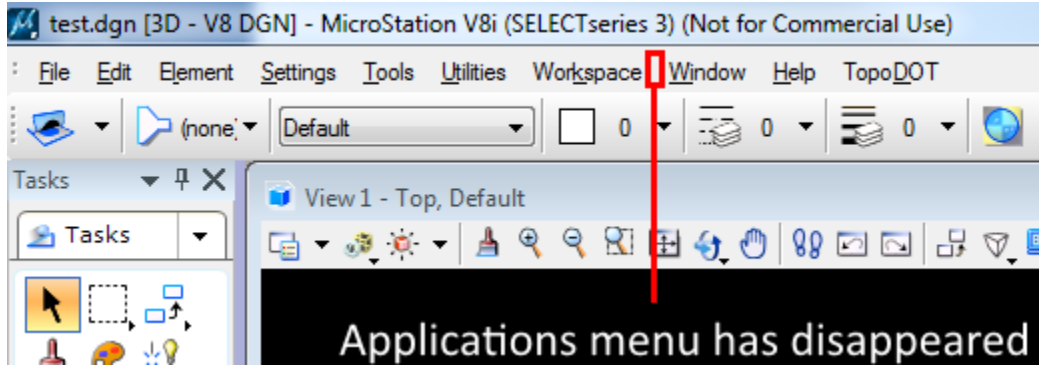
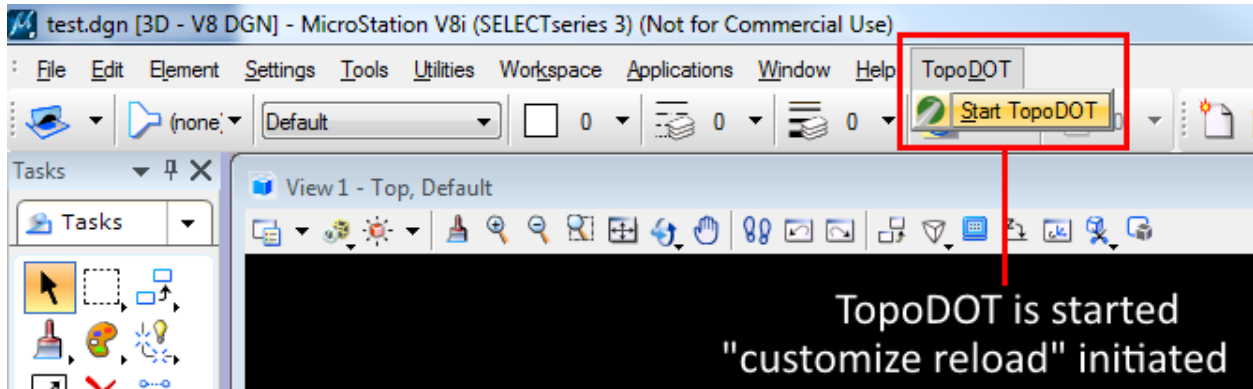
Re: Tool menus disappearing when loading TopoDOT

Background

TopoDOT utilizes MicroStations DGNLib for generating toolbars and menus. These menus change dynamically according to the current state of TopoDOT. Ex: If TopoDOT is not loaded, the toolboxes will be hidden. In order for TopoDOT to properly update the toolboxes, a MicroStation keyin “customize reload” must be initiated to redraw the interface

Several Bentley products utilize an old technique for generating toolbars/menus within MicroStation. This old technique falls victim to an issue where the generated menus will disappear when the “customize reload” keyin is initiated. The only solution for this is to completely disregard the use of “customize reload” thus not allowing TopoDOT toolboxes to update accordingly.





Workaround Instructions:

1. Navigate to your .\MicroStation\config\appl\ directory. Example: "C:\Program Files (x86)\Bentley\MicroStation V8i (SELECTseries)\MicroStation\config\appl\" directory.
2. Open the TopoDOT.cfg file in a text editor.
3. Locate the following line
#TDOT_COMPATIBLE = 1
4. Change the line to
TDOT_COMPATIBLE = 1
5. Save changes and restart MicroStation.

```

TopoDOT.cfg - Notepad
File Edit Format View Help
#####
#--- Example application configuration file for TopoDOT ---#
#--- Copy this file to $(MSDIR)config\appl\ directory ---#
#####
#--- Define the root path to TopoDOT program ---#
TDOT_DIR = C:/TopoDOT/
_USTN_APPL = $(TDOT_DIR)config/
#--- Custom units FILE ---#
MS_CUSTOMUNITDEF = $(TDOT_DIR)Microstation/data/units.def
#--- Load GUI DGN Library Menu File ---#
MS_GUIDGNLIBLIST < $(TDOT_DIR)Microstation/interfaces/TopoDOT.dgnlib
MS_DGNLIBLIST < $(TDOT_DIR)Microstation/interfaces/TopoDOT.dgnlib
#--- Mdl program paths ---#
MS_MDL < $(TDOT_DIR)Microstation/mdlapps/
MS_MDLAPPS < $(TDOT_DIR)Microstation/mdlapps/
#--- Search path to dynamic link library files ---#
MS_LIBRARY_PATH < $(TDOT_DIR)Microstation/mdlapps/
MS_L_LIBRARY_PATH < $(TDOT_DIR)Microstation/
#--- Search path for VBA Applications ---#
MS_VBARESEARCHDIRECTORIES < $(TDOT_DIR)Microstation/vba/
MS_ADDINPATH < $(TDOT_DIR)Microstation/bin/
#--- Autoload Main VBA Interface ---#
MS_VBAAUTOLOADPROJECTS > TopoDOT_New
#--- Uncomment this line if you would like TopoDOT to start automatically ---#
#MS_DGNAPPS > TopoDOT
#--- Uncomment the line below if you would like a GEOPAK and IPACK friendly TopoDOT toolbar ---#
TDOT_COMPATIBLE = 1
#--- End of configuration ---#

```

Questions and/or Comments
Certainty 3D, LLC
7039 Grand National Drive, Suite 100
Orlando, FL 32819
Tel: 407 248 0160
Email: support@certainty3d.com
www.certainty3d.com